

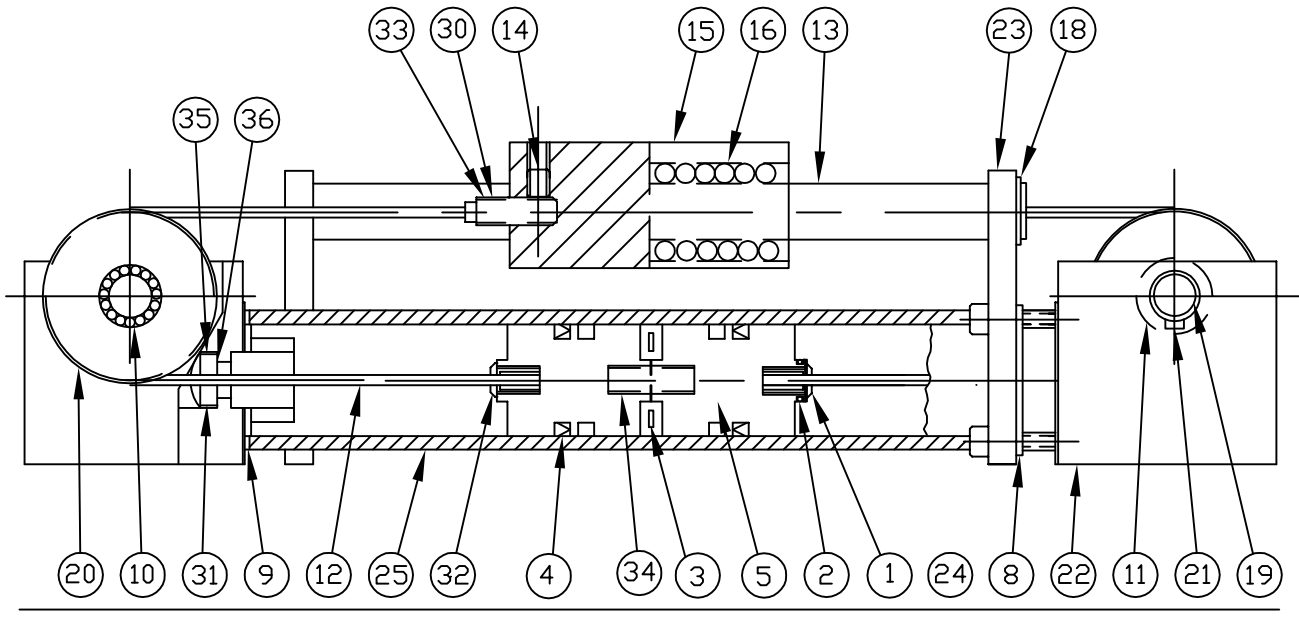
GREENCO
CORPORATION

TRAC-TROL

5688 W. CRENSHAW ST.
TAMPA, FL 33634-3013
PH: (813) 882-4400
FAX: (813) 888-6688

12/2004

MODELS 07 & 10



PARTS LIST

WHEN ORDERING PARTS, PLEASE SPECIFY COMPLETE MODEL AND SERIAL NUMBER

DESCRIPTION	PART NO.	QTY.	DESCRIPTION	PART NO.	QTY.
* 1. PISTON WASHER	410-00621	(2)	16A. RULON (OPT.)	510-01624	(4)
* 2. PISTON O-RING	410-00620	(2)	18. RET. RING	315-01301	(4)
* 3. MAGNET (OPT.)	1XX-00807	(1)	19. SHAFT	110-01630	(2)
* 4. PISTON U-CUP	4XX-01000	(2)	20. SHEAVE	110-01680	(2)
* 4A. VITON (OPT.)	4XX-01010	(2)	21. RET. RING	310-01690	(4)
5. PISTON	1XX-00800	(2)	* * 22. HEAD	110-0026X	(2)
PISTON (MODEL 07)	107-00801	(1)	23. ROD FLANGE	1XX-01208	(2)
8. RET. RING	3XX-01300	(2)	24. HD. BOLT	310-00100	(8)
* 9. HD. GASKET	4XX-00500	(2)	25. TUBE		(1)
10. NEEDLE BEARING	510-01620	(2)	* 30. TROLLEY SCREW	110-00720	(2)
11. THRUST WASHER	510-01610	(4)	* 31. E-Z LOCK SCREW	110-00790	(2)
* 12. CABLE	910-03900	(2)	* 32. PISTON SCREW	110-00730	(2)
13. ROD		(2)	* 33. SWAGE	110-00710	(4)
14. SET SCREW	310-01413	(2)	34. CONNECTOR		(1)
15. TROLLEY	110-01411	(1)	* 35. E-Z O-RING	410-00503	(2)
16. LINEAR BRG.	510-02202	(4)	* 36. CBL. SEAL	410-00740	(2)

(* *) SPECIFY PORT POSITION (*) 20C REPAIR KIT

NOTE: PARTS 30, 31, 32, 33, 35, AND 36 SUPPLIED ON CABLE SUB-ASSEMBLIES ONLY
#3 SLYDRING IS OBSOLETE

PM0710.DWG